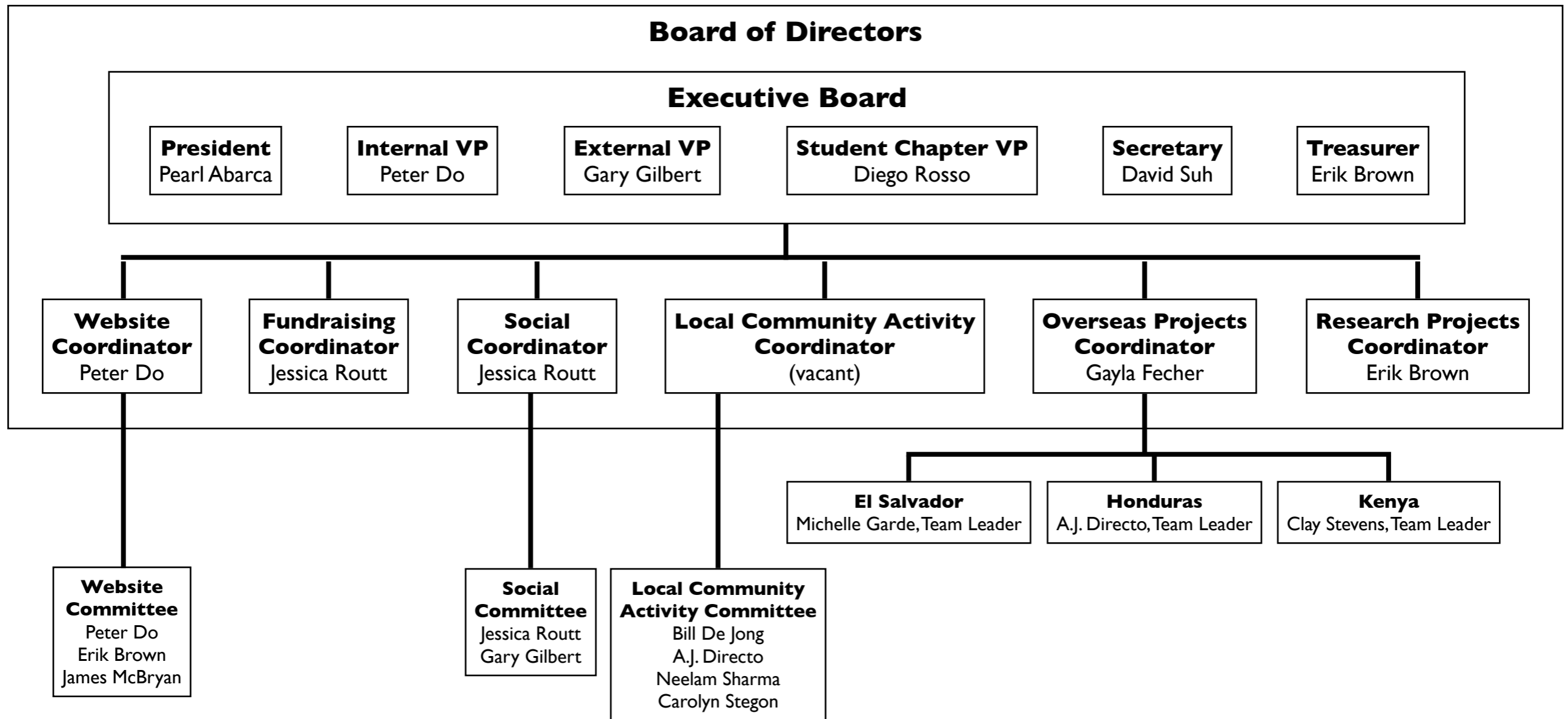


Engineers Without Borders

Orange County Professionals Chapter Organizational Structure



Notes:

The Executive Board manages the affairs of the Chapter and consists of the President, Internal VP, External VP, Student Chapter VP, Secretary, Treasurer, and Past President (Past President not shown above, as Pearl Abarca is the first-ever President). Executive Board members are elected, and the elections are held no later than the last day of February of the election year (Article III, Sections 1, 4 of the Constitution; Article V, Sections 1, 3 of the Bylaws).

The Coordinators are appointed as needed by the Executive Board to carry out the business of the chapter. The Executive Board and the Coordinators are collectively referred to as the Board of Directors. Coordinators may, at their discretion, create Committees to assist with performing the duties of the position (Article IV, Sections 1, 4 of the Constitution).